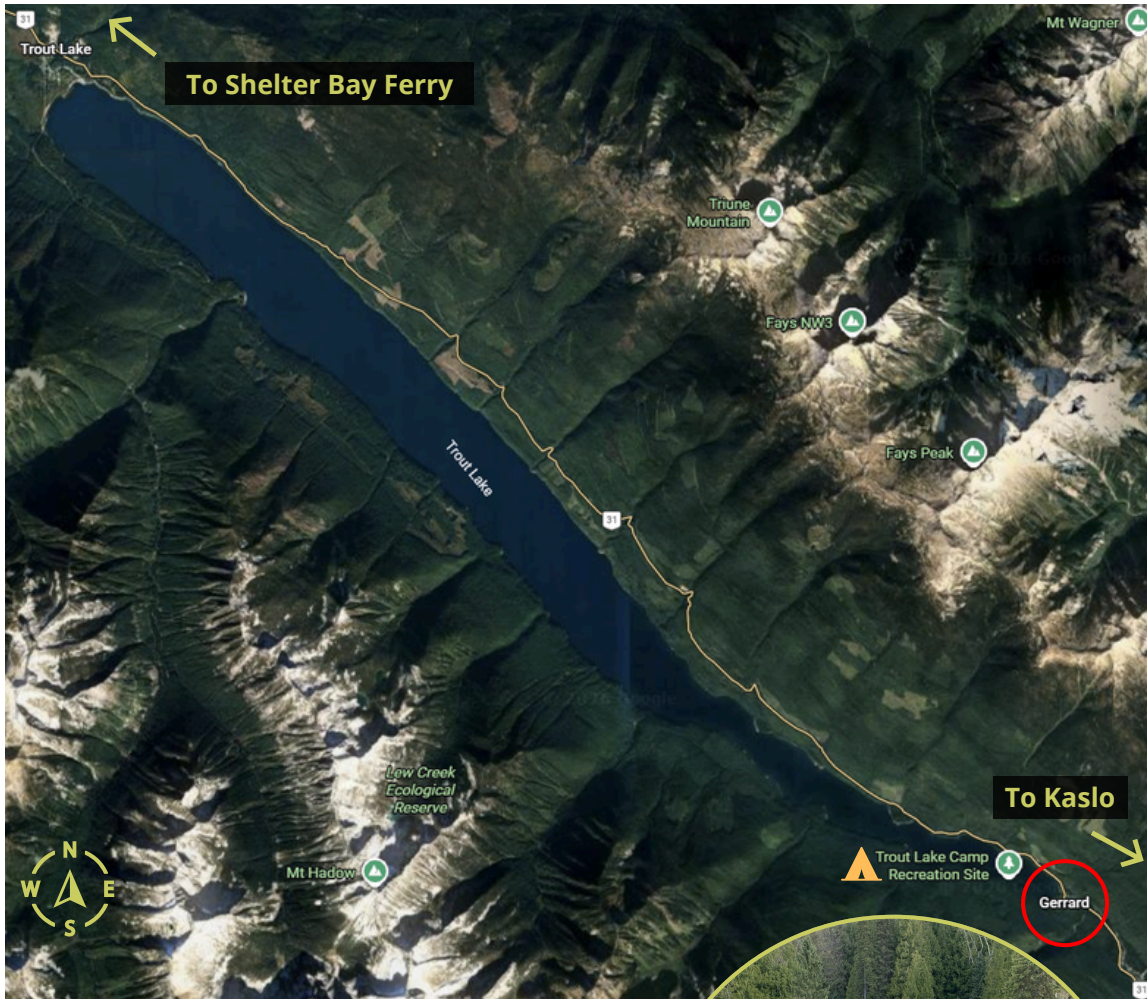


x^wəx^wmína? Fishery @ qalisu? (Trout Lake) Map

Location: Gerrard, BC (82 km NW of Kaslo via Balfour-Kaslo-Galena Bay Hwy/BC-31 N) **Coordinates:** 50°30'34.0"N 117°16'34.1"W



LOCATION

The fishery will take place at the Lardeau River outlet near the Trout Lake bridge in Gerrard, BC.

TIME

Fishery opens at sunrise and operates all day during the weekend. On-site camping is encouraged!



 Camping Spots

 Fishing Spots

